

ELLE DECORATION

Colour,
pattern &
rebellious
decorating
for the new
season

OCTOBER 2022



Including
the ultimate
guide to
modern
bathrooms

The future is now

£5.99
10
9 770957 894214



PERFECTLY CAST

Moss-coloured lime-plaster walls and blackened terracotta floors bring the natural beauty of Northern Ireland to this sanctuary-like home in London's Walthamstow

WORDS HANNAH NEWTON

PHOTOGRAPHY CLAIRE WORTHY/NEWTON + WORTHY

Dining room A beautiful vintage Charlotte Perriand dining table stands in the middle of the open-plan dining space, surrounded by secondhand chairs from France. The paintings (see next page) are by David Hardy at Partnership Editions, while the bowl on the table is from Ferm Living. Heavy, pink bouclé curtains – for similar fabric try Kvadrat – soften the connection between this space and the garden beyond. Garden Floating steps conceived by garden designer Miria Harris lead the eye into this slice of urban green space. She also sourced the vintage Niels Gammelgaard garden chairs and table, as well as a selection of pots from Ferm Living and Hoxton Gardenware.



Growing up, Julie Harkin could often be found walking the wild coastal paths around Derry or exploring Northern Ireland's gorse-covered valleys. For this casting director, who was nominated for an Emmy Award last year for her work on British series *I May Destroy You*, being immersed in nature is a well-trodden route to calm. It is not surprising, then, that when beginning to contemplate the design of her Victorian home in London's Walthamstow Village, which she shares with her husband and young son, she decided to start by looking at the garden.

Enlisting the help of landscape designer Miria Harris right from the start of the project allowed Julie to emphasise her aim of creating a home that is linked to its surroundings. 'It is quite rare to be involved at this stage,' admits Miria, who designed the front garden first, allowing it to 'set the tone'. That way, she adds, 'the house would respond to the garden, not the other way around'.

Inside, the decision was made to excavate and lower the existing ground floor, creating an extra 40 centimetres of ceiling height that, combined with a new side-return extension by the architecture firm Neighbourhood Studio, ensured the open-plan kitchen and living area was blessed with as much light as possible. Previously a cold, dark space due to the walled courtyard to the rear, the room now works in harmony with the outside. The floating steps in the garden lead the eye out past the sliding doors, creating what Miria

describes as 'a sexy, gentle tease, slowly revealing the green, pale-pink, white and bronze tones in the planting that reflect the delicate palette that's been used inside'.

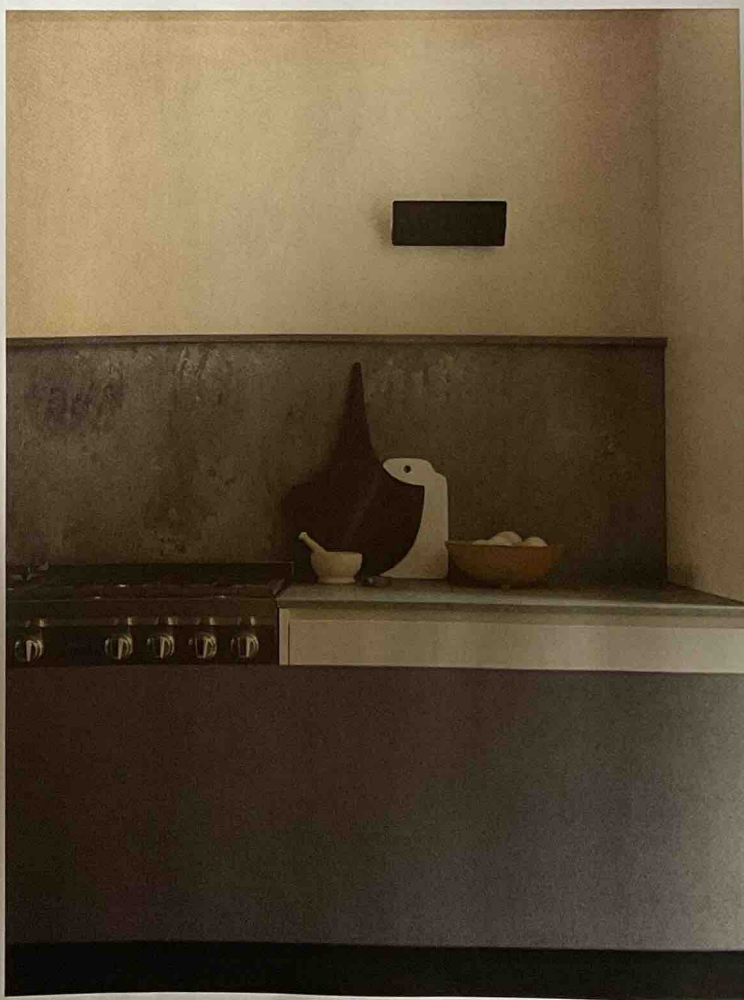
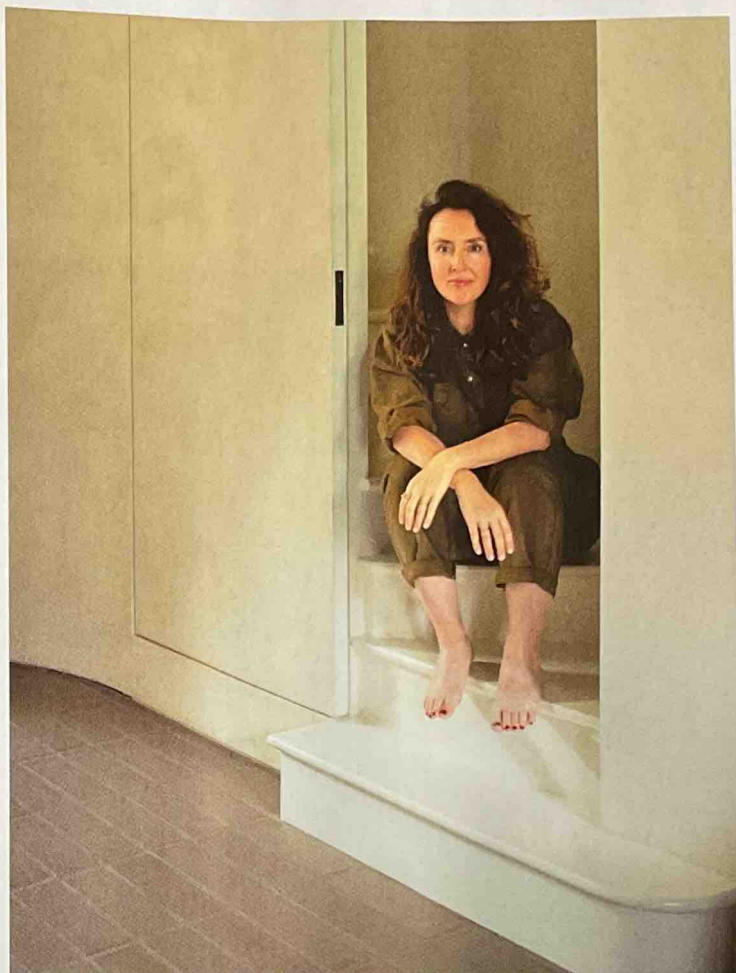
For this, Julie sought the help of her friend Sarah Ellison, an interior designer at Frank & Faber. The pair worked together to select colours, with the upstairs remaining light and bright - 'Farrow & Ball's "School House White" for the walls and woodwork, with curtains in the same colour,' explains Sarah - while downstairs is cosier and more textural. Finished in lime plaster that has been tinted a rich, mossy green, the living room has the atmosphere of a secluded and shaded forest glade. The flooring here is inspired by Julie's childhood holidays, which she often spent staying in ancient stone cottages in Donegal with her family. Dedicated to finding the perfect tiles, she spent weeks carrying samples around in her handbag. 'I would randomly pick options out of my bag to consider the shades, and even visited the Aesop store in Bath to ask about its floors,' she recalls, having eventually settled on a black terracotta brick, produced by Claybrook in a bespoke shape.

'I really wanted to create a nurturing environment,' Julie explains. 'A space that is very welcoming. I feel loved and cared for when I come home. This is a safe haven of wellbeing away from the rest of the world.' miriaharris.com; neighbourhood-studio.com; frankandfaber.co.uk >



BEING IMMERSSED IN NATURE IS A WELL-TRODDEN ROUTE TO CALM AND THE SECRET TO THIS HOME'S STYLE

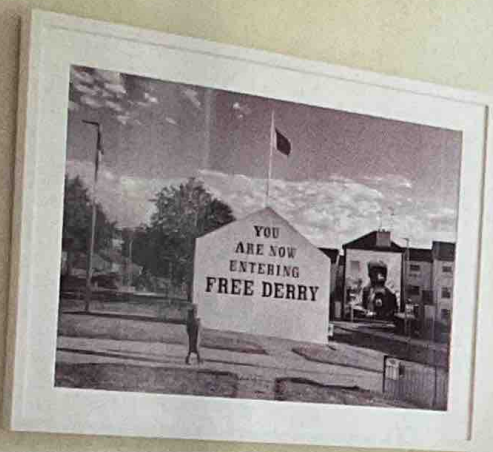
Portrait Homeowner Julie Harkin sits on the staircase that leads down into this home's extension by Neighbourhood Studio **Kitchen**. Situated between the rug and the dining room, this space is defined by two solid forms: the black steel island by Sola Kitchens and a large 'Cone' pendant light by Rose Uniacke. An 'Applique à Volet Pivotant' wall light by Charlotte Perriand for Nemo Lighting illuminates the countertop, which is decorated with accessories that keep to this home's natural palette. For similar, try the selection of wooden chopping boards by Selwyn House at Toast and Leach Pottery's ceramic pestle and mortar >





Snug Lime-plastered walls in mossy green, paired with woodwork picked out in Farrow & Ball's 'Studio Green', give this room at the back of the open-plan kitchen/dining space a cosy feel. The sofa is from BoConcept, while the rug and marble coffee tables are all vintage – try AU Bespoke for similar. There are some classics on display in this room, too, from the 'IC T1' table lamp by Michael Anastassiades for Flos to the black 'Togo' armchair by Michel Ducaroy for Ligne Roset and 'Flag Halyard' rope chair by Hans J Wegner for PP Mobler. The bespoke wallhanging is a piece by Sussy Cazalet >







Living room This formal space at the front of the house, painted in 'School House White' by Farrow & Ball, boasts an original Victorian fireplace decorated with a 'Pond' mirror from Ferm Living. The 'Avio' sofa is a design by Piero Lissoni for Knoll and the sculptural ceramic side table is by Studio Floris Wubben. Hanging above is an abstract work by artist John Blackburn. In the corner of the room by the window sits a cream 'Camaleonda' chair by Mario Bellini for B&B Italia. The curtains are from Romo and the ceiling light is a vintage piece by Gaetano Scolari. Photographer Frank Harkin, Julie's father, took the picture of Derry that hangs on the wall >



'I FEEL LOVED AND
CARED FOR WHEN
I COME HOME. THIS
IS A SAFE HAVEN
OF WELLBEING'

Bathroom Oak joinery, combined with a thin countertop of Calacatta marble and textured white metro tiles – try 'Potters Glaze' by Claybrook – lend this space an understatedly luxurious, natural feel. For similar basins, try Dyke & Dean **Main bedroom** 'Harlosh' bedside tables by Pinch sit either side of the bed, with 'Hector' wall lights by Original BTC placed above. The large artwork is by Formworks, while the forest-green linen curtains were purchased at Romo. The ceiling light, with its decorative glass discs, is a vintage find discovered by homeowner Julie. In the corner of the bedroom (above left) a mid-century chair is placed beside a minimal floor lamp See **Stockists** page for details **ED**



